



# Chapter N° 12

P A N D N O O R D

By

The Collection

*Northern Star*







# *Explore* The Collection



The office space is evolving. Increasingly, organisations will opt for secure, flexible offices – buildings that foster a sense of destination and community, in which employees can flourish and focus. The future of work will be facilitated by technology.

It is this set of needs that The Collection sets out to meet and surpass. Across Amsterdam's most prestigious monumental addresses, we have assembled an unprecedented network of bespoke office space replete with unparalleled amenities and a hospitality-driven experience.



*The Collection is your key to high-quality, bespoke office space in the heart of Amsterdam.*



As much as The Collection is a portfolio of prestige office spaces, it is a collection of brilliant minds and inspiring organisations, a place where driven personalities on a mission to make a difference can connect with like-minded people.





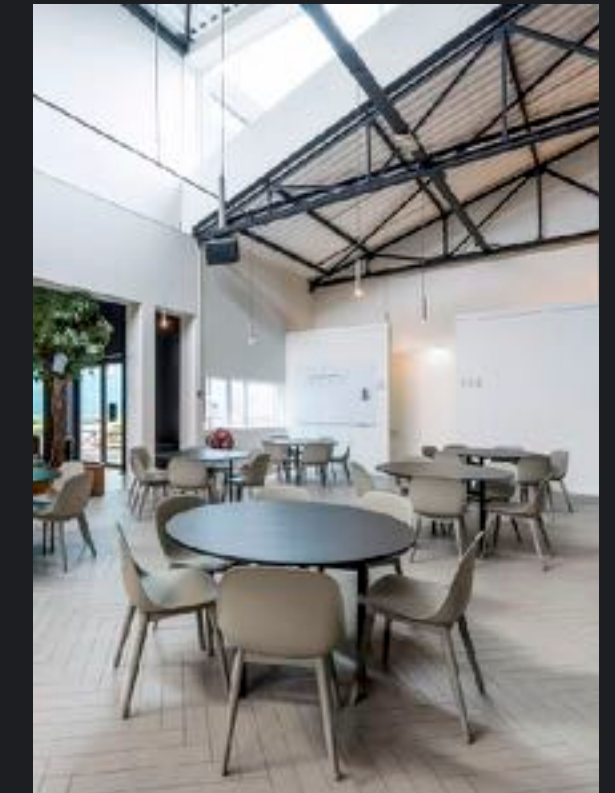
Pand Noord by *The Collection*

## Chapter N° 12

Welcome to Pand Noord, where The Collection rolls out the red carpet for creative minds. Located just across the IJ water from Amsterdam Centraal Station, Pand Noord was originally built in 1917 as a warehouse, undergoing substantial expansion in 2006 with the addition of a second building to the rear. This occasion marked the prime time of former anchor tenant A-Film, one of the largest Dutch film distributors that ever came to be and has handled international smashes such as *The Lord of the Rings* and home-grown successes including *Zwartboek (Black Book)*. This transformation produced the Pand Noord we see today, with a traditional brick front giving way to an impressive complex whose turquoise tones reference the waters of the port.

Conducive to connectivity and growth, Pand Noord has earned a stellar reputation as a creative hub, offering an inspiring workplace that goes beyond mere work. It is home to more than 40 predominantly creative companies. The building's extensive facilities include a reception area, cinema, catering services, gym, meeting rooms and shared spaces for collaborating. Friendly rivalries can be resolved on the ping pong table, and there's a large south-facing balcony for meetings with added Vitamin D. Pand Noord is a place where body and mind can flourish to dazzling effect.

Pand Noord comprises 7,800 square metres of light and modern workspace, plus an indoor parking garage. The building is situated in a diverse and newly reinvigorated neighbourhood with plenty of good restaurants and cafés nearby. Pand Noord is conveniently accessible by car, as well as by public transport, with Metro (North-South-line) and bus stops on its doorstep. The journey from Amsterdam Centraal station to Pand Noord takes less than ten minutes, and those who prefer to cycle can take bridge 902 to IJplein, which connects directly to Pand Noord.







# The Portfolio

*As a member of The Collection you gain access to all the services & amenities across our portfolio.*

Chapter N°1

**Looiersgracht 43**



Chapter N°2

**Stadhouderskade 85**



Chapter N°3

**Westermarkt 2**



Chapter N°4

**Herengracht 433**



Chapter N°5

**Keizersgracht 163/167**



Chapter N°6

**Herengracht 134/136**



Chapter N°7

**Singel 151 / Spuistraat 104**



Chapter N°8

**Herengracht 54**



Chapter N°9

**Weteringschans 85**



Chapter N°10

**Sarphatistraat 33/35**



Chapter N°11

**Hoogte Kadijk 143/145**

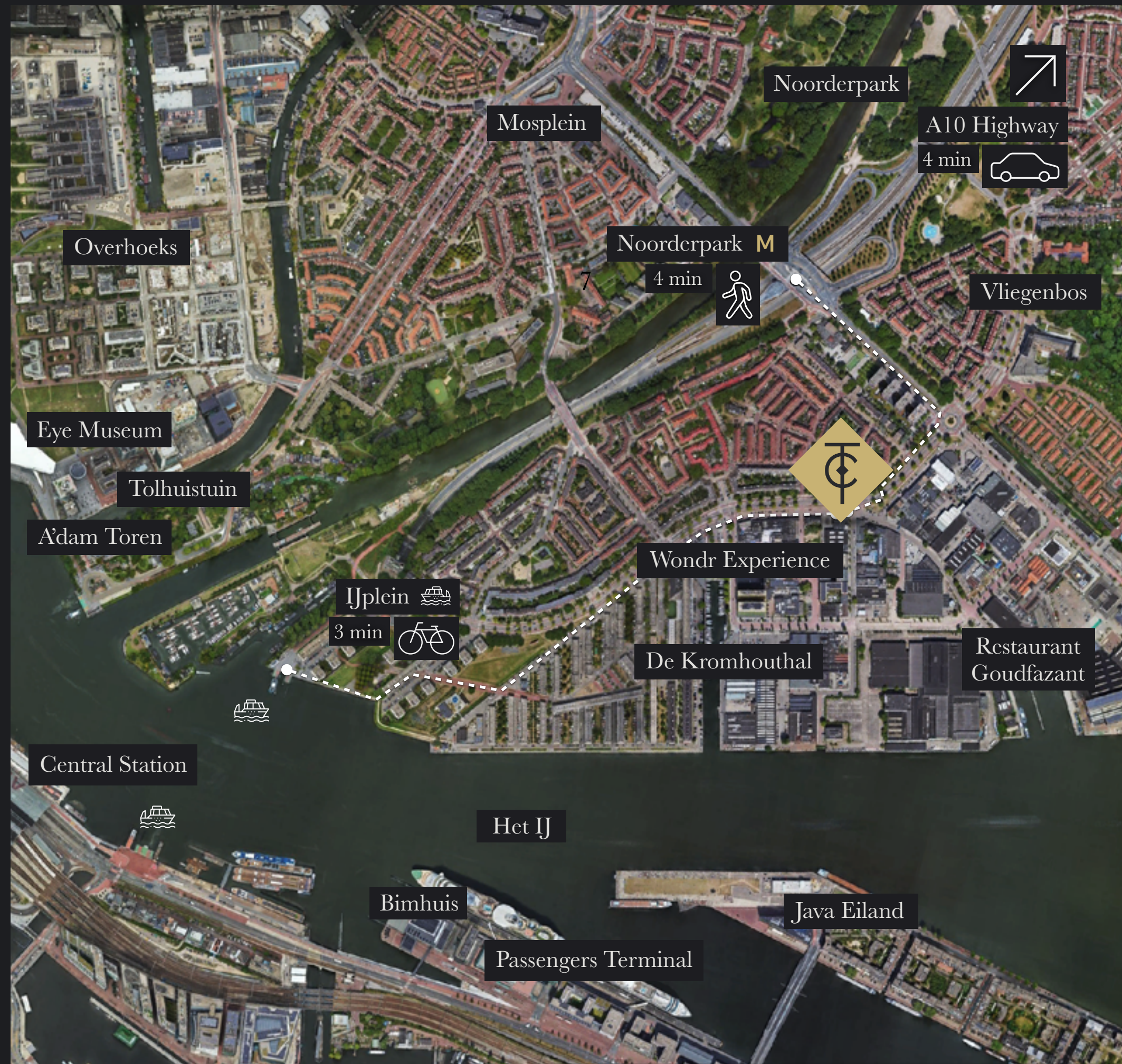


Chapter N°12

**Pand Noord by The Collection**







# The location

Pand Noord is located directly in the heart of a fast developing area

- Well-connected location by car and public transport
- Attractive car parking ratio
- Located at just 4 minutes from A10 highway
- Situated in bustling Amsterdam North
- Metro stop "Noorderpark" is close by and takes you to Amsterdam Central Station in under 2 minutes
- Surrounded by cafe's, hotels and restaurants





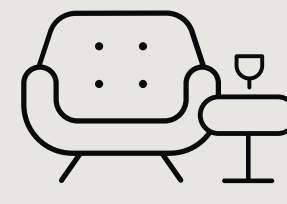
# Local services & amenities

## Chapter N° 12

Pand Noord by *The Collection*



*Concierge Services*



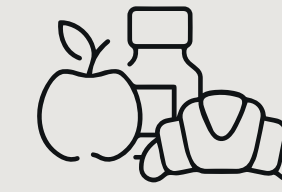
*Welcoming Lobby*



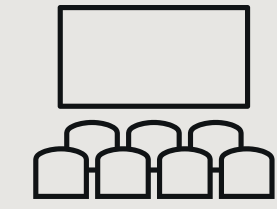
*Coffee Bar*



*Meeting Room*



*Restaurant*



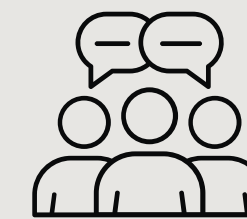
*Cinema*



*Covered Bike Storage*



*Shared E-bikes*



*Community*



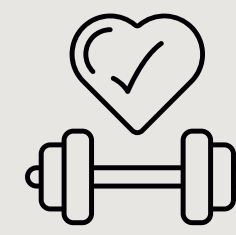
*Parking Area*



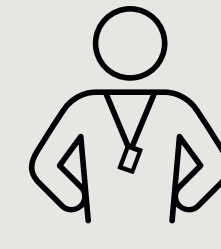
*Game Room*



*Shower*



*Gym*



*Personal Trainer*



*Mindfulness & Yoga*

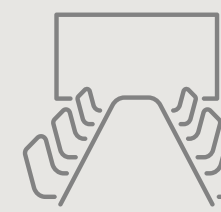
As a member of The Collection you also gain access to services & amenities of the other Chapters of The Collection Collection



*Penthouse Apartment*



*The Boat*



*Board Room*



*Garden*





# Exemplary environment

To guarantee you maximum convenience as a member, The Collection has partnered with trusted specialists in order to provide you with support in three main areas.

---



## Fit-out

Choose our high-quality The Collection fit-out package and move in as soon as you like, or engage our architect to create the perfect new environment for your business.

## IT Infrastructure

Design your own custom-made IT infrastructure together with our IT specialist, or have our IT specialist set you up with our standard great connectivity in no time.

## Facility management services

Enjoy the benefits of our facility management partner and opt in on all the services that you desire, such as cleaning, hospitality, security, catering and more.





## Specifications

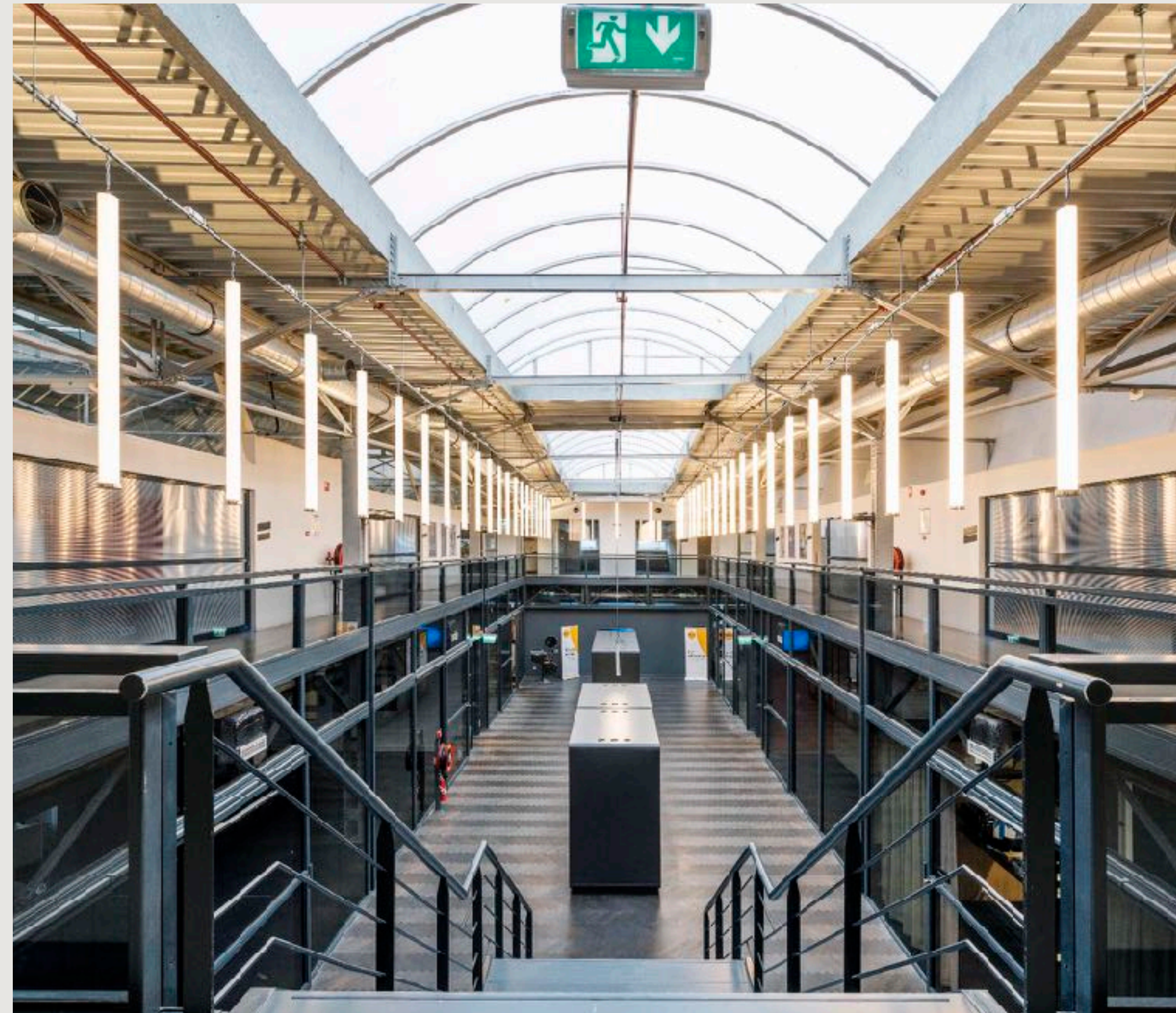


- Hospitality host
- Coffee bar
- Restaurant
- Member lounge
- High-end meeting rooms
- Gym
- Parking area
- Cinema



- Renovated 2023
- High-specification finish
- High quality communal areas





## Lettable Floor Area

# Availability

Unit 1 (3rd floor)	85 sqm
Unit 2 (ground floor, 1st floor)	434 sqm
<hr/>	
Total	519 sqm

The Collection offers flexible lease terms and rental rates.





# Unit 1

85 m<sup>2</sup>





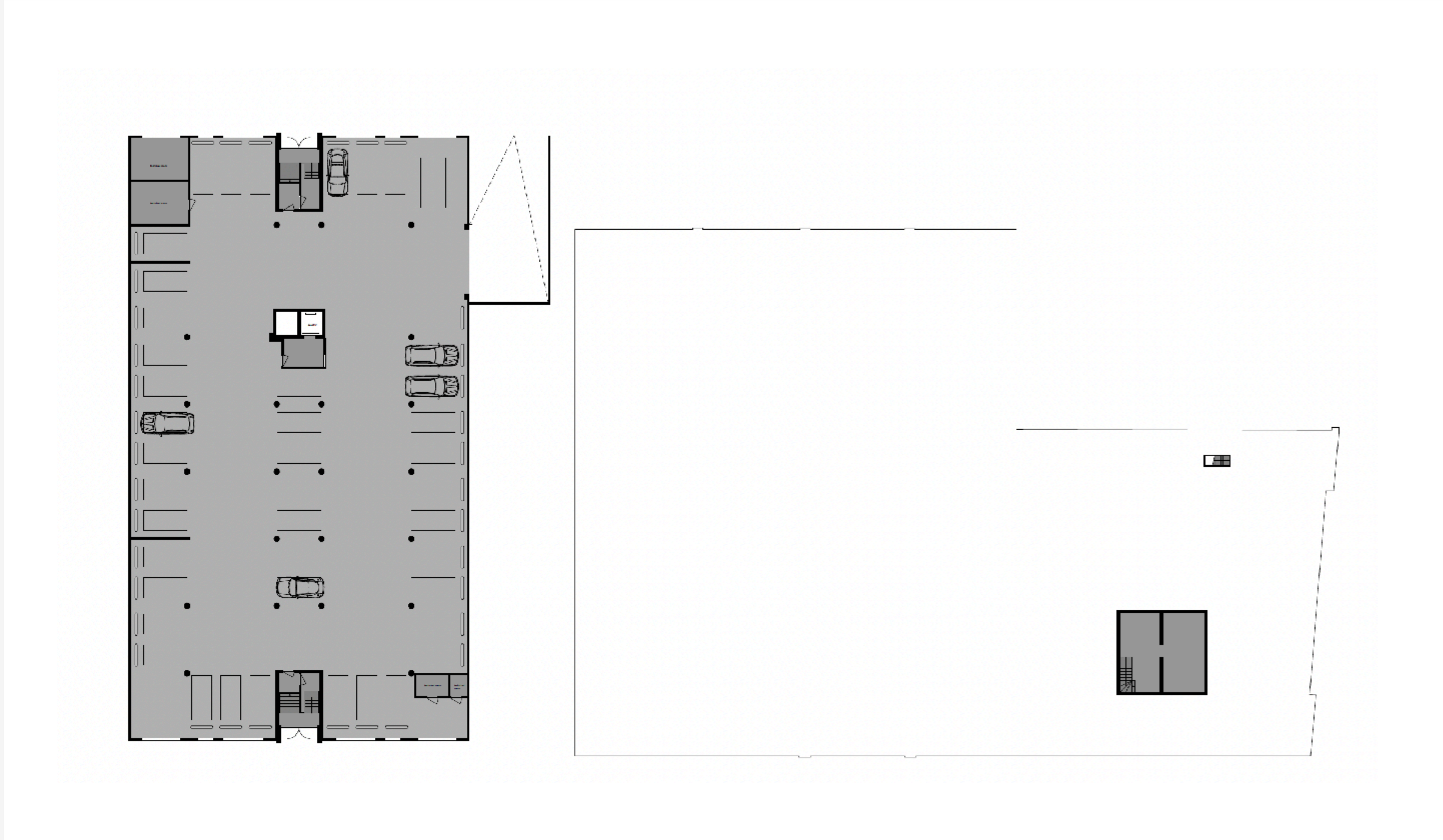


# Unit 2

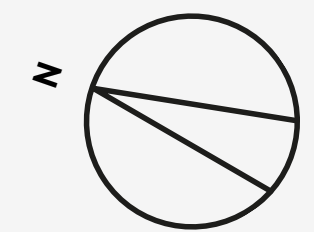
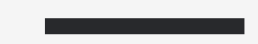
434 m<sup>2</sup>







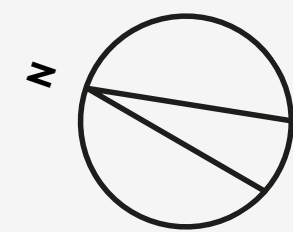
Basement



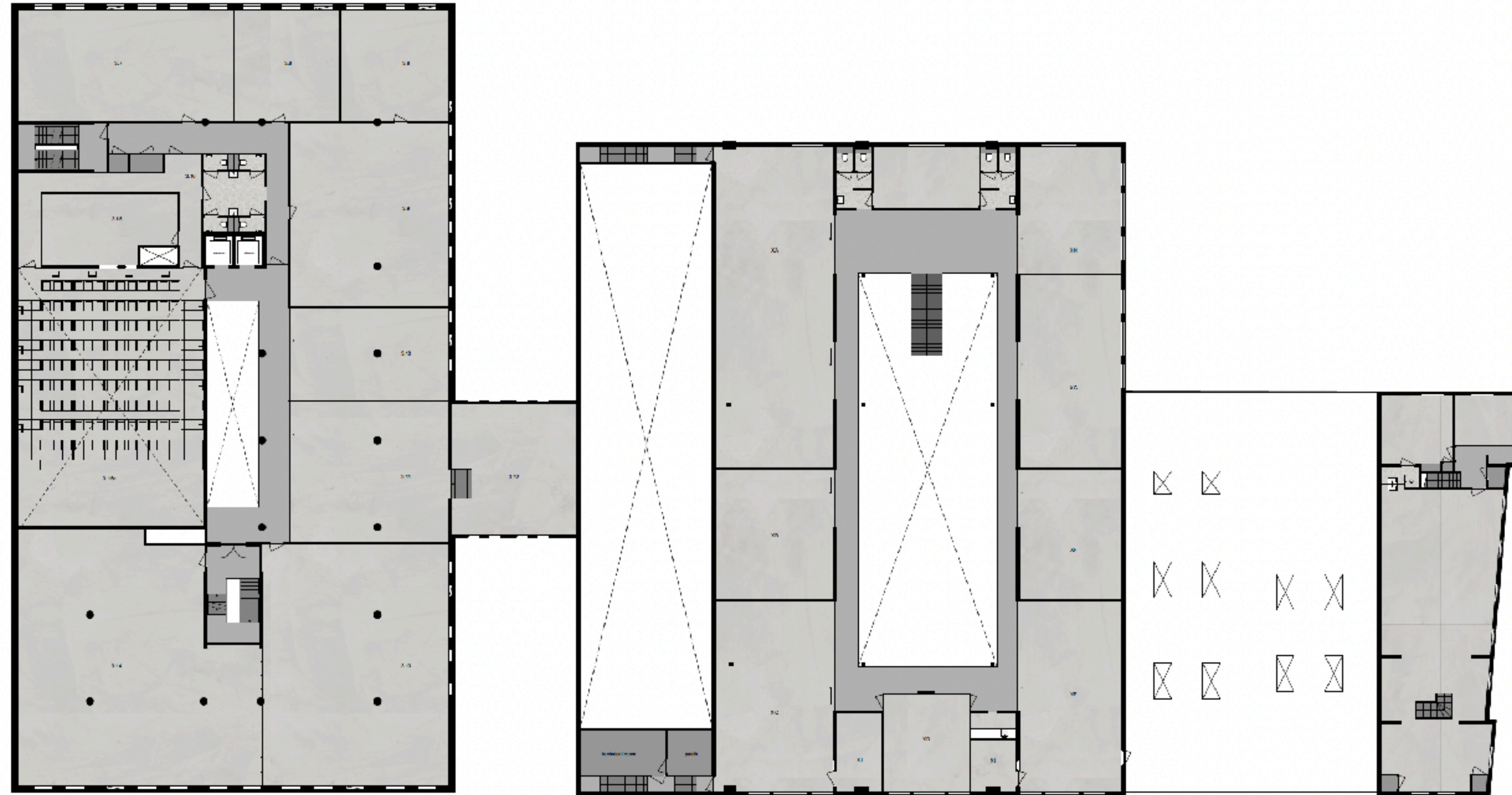




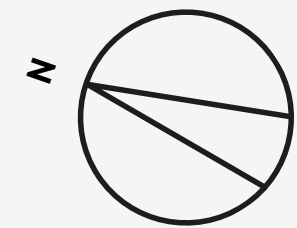
Ground floor



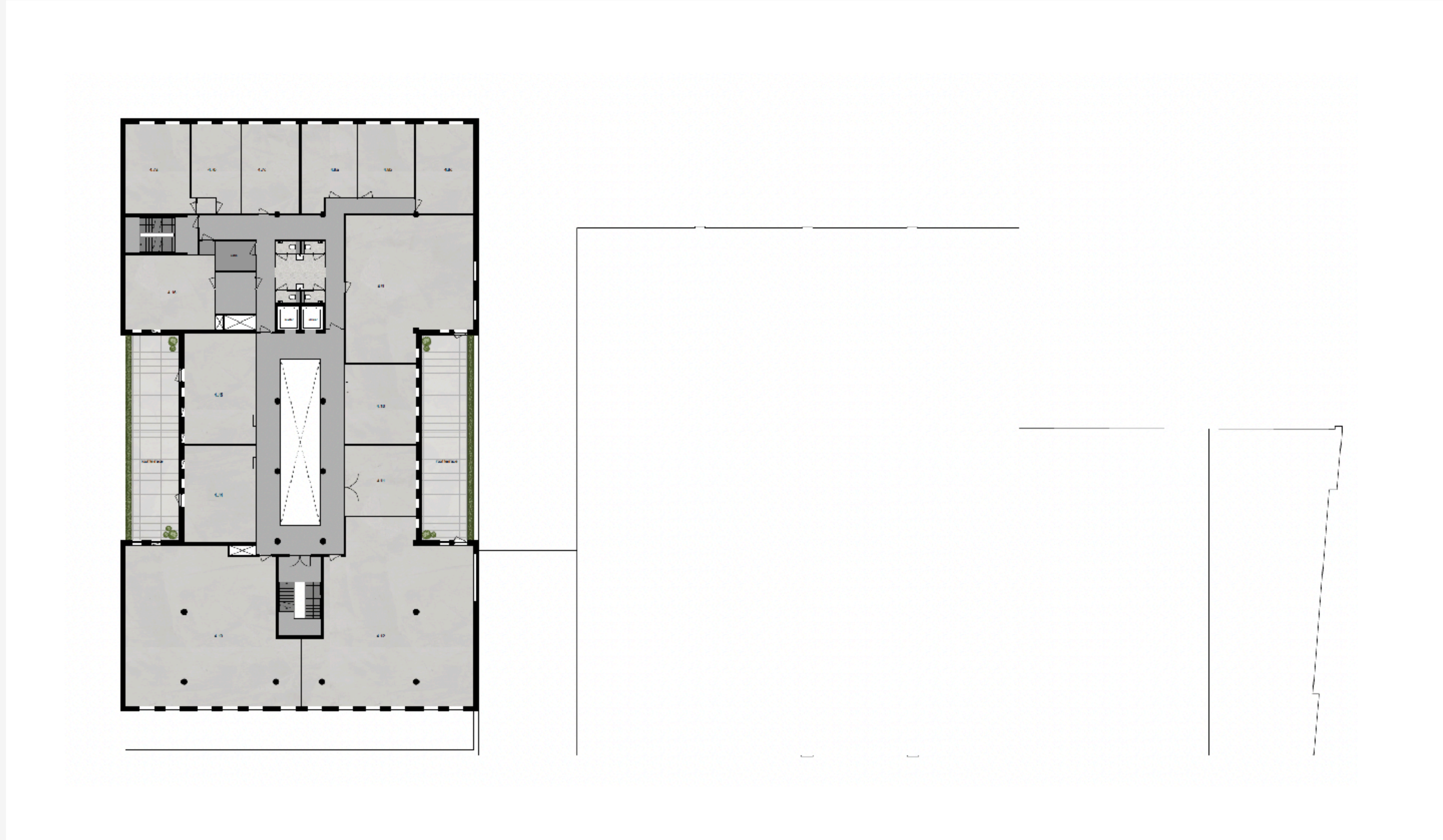




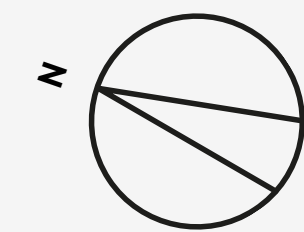
First  
floor



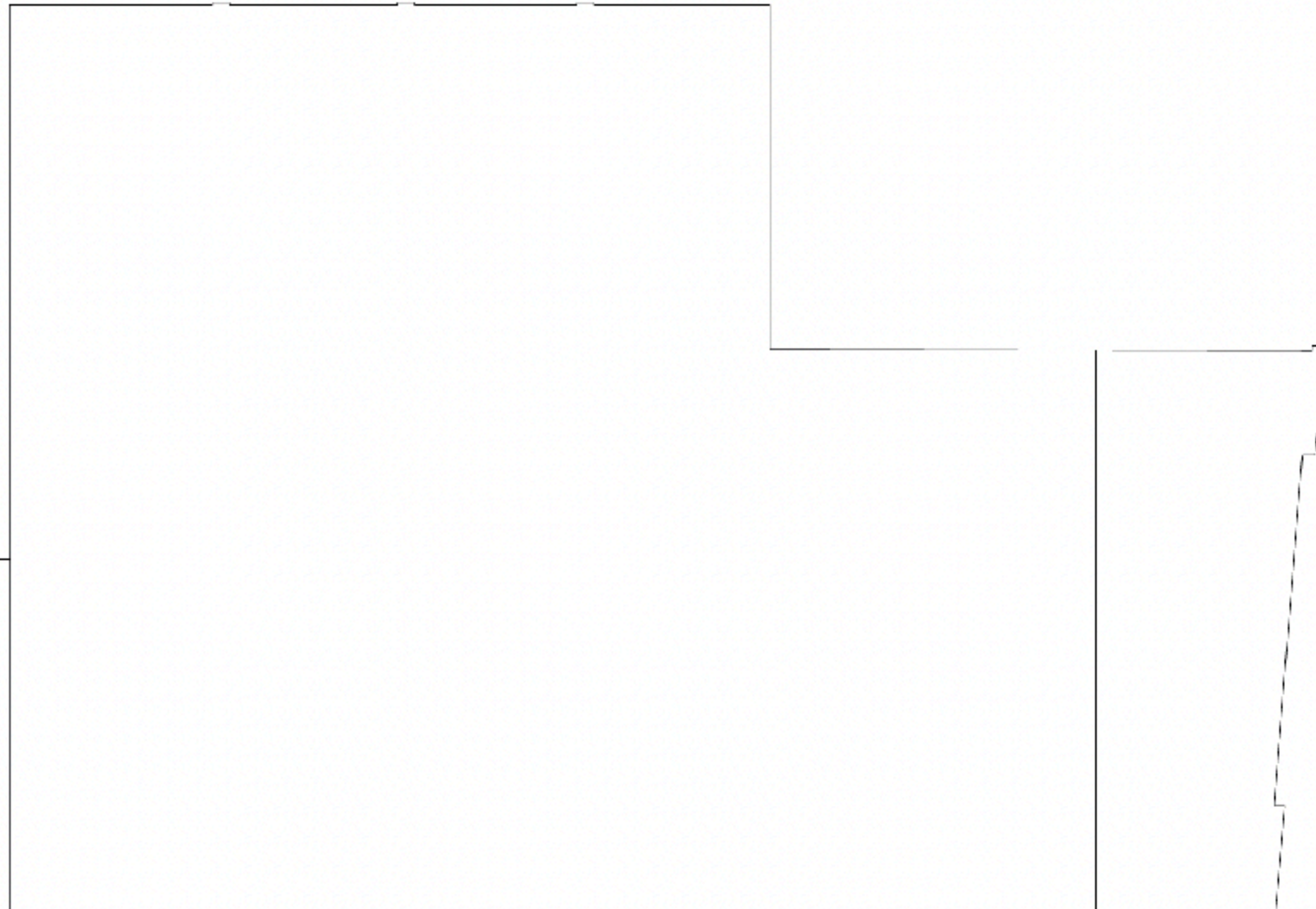
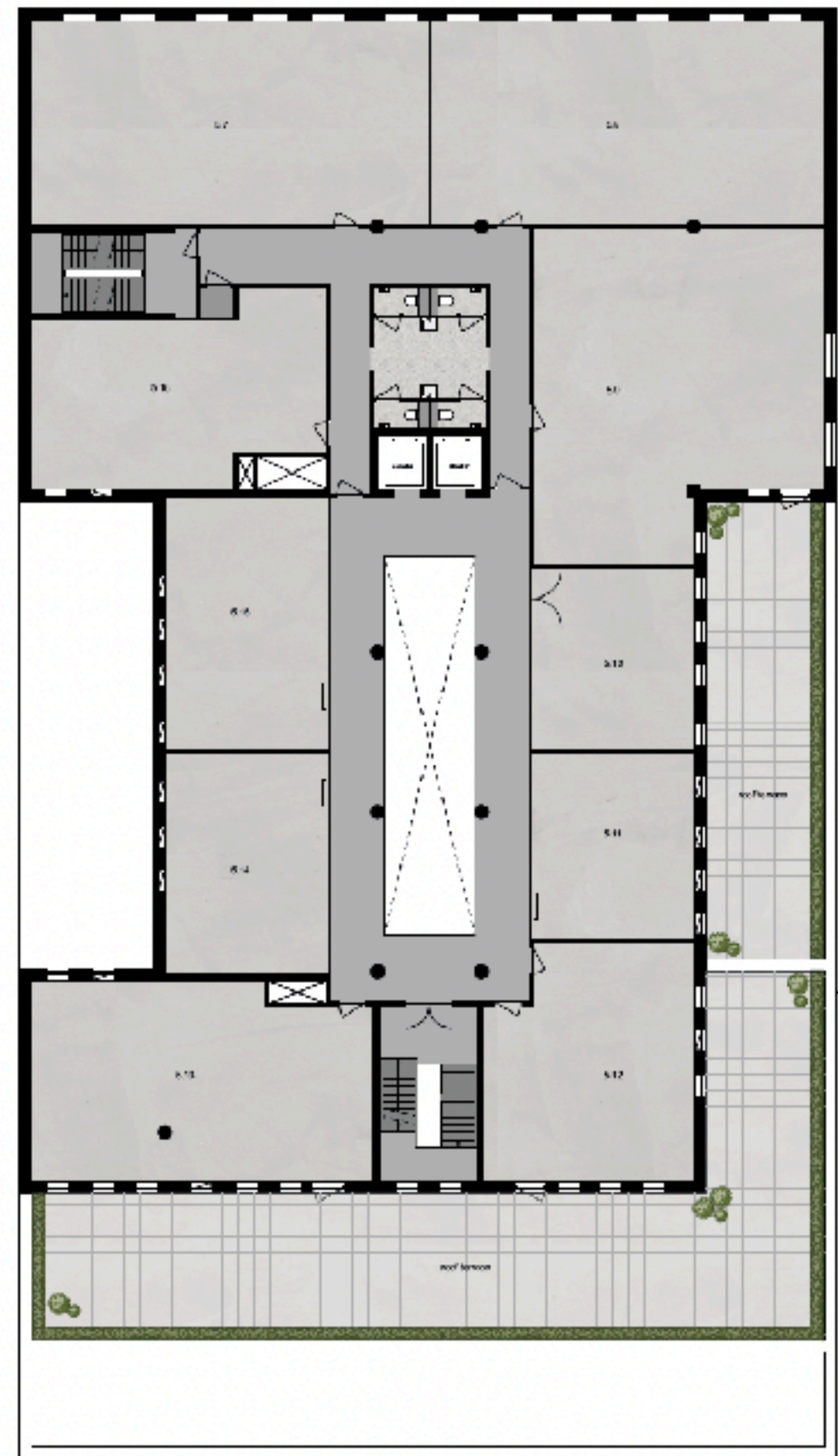




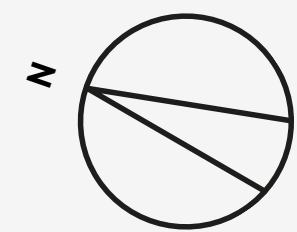
Second  
floor



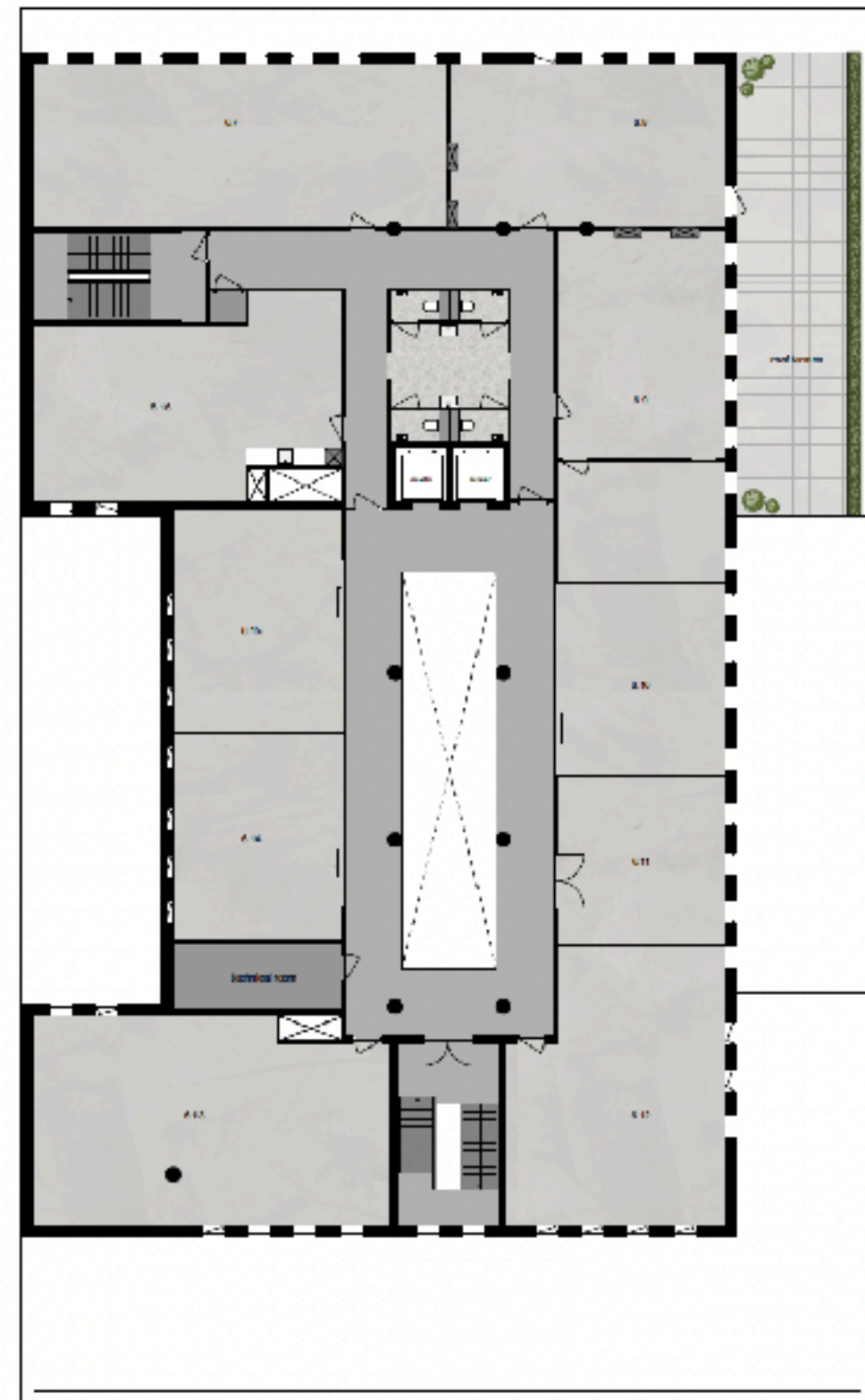




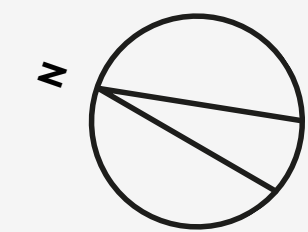
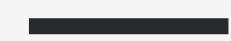
Third  
floor







Fourth  
floor







# The Collection

INC.

Amsterdam

Gijsbert Witteveen  
[gijsbert@thecollection.inc](mailto:gijsbert@thecollection.inc)  
+31 6 11 44 10 71

*[thecollection.inc](http://thecollection.inc)*



[broersma.nl](http://broersma.nl)  
+31 (0)20 305 97 97