

The logo for Bloom House features the words "BLOOM" and "HOUSE" stacked vertically. The letters are a dark teal color and have a unique, rounded, and slightly irregular font style. The "H" in "HOUSE" is particularly stylized, with its vertical strokes curving inward at the top.

BLOOM HOUSE

Singel 540 - 1017 AZ Amsterdam

www.bloomhouse.amsterdam



The image features a white background with decorative geometric patterns in the corners. The top-left corner has a cluster of overlapping semi-circles and circles in shades of red, grey, and light blue. The bottom-left corner has a similar cluster with grey, dark blue, and light blue shapes. The bottom-right corner has a cluster with grey, orange, and dark blue shapes. The text is centered in the middle of the page.

Home for
growing and
flourishing
businesses



Contents

05 About Bloomhouse

06 Location

08 Accessibility

09 Availability

11 Office building

12 Interior

15 Features

16 Delivery level

17 Facilities

20 Floor plans

24 Contact



About **Bloomhouse**

Bloomhouse is a stunning contemporary office building in the heart of Amsterdam - the perfect location for growing and flourishing businesses. This turn-key delivered office space offers everything you need to succeed, from state-of-the-art technology to modern fit-out and essential office equipment. This building is ideal for modern businesses that seek a prime location and high-quality workspace.

Location

Bloomhouse boasts of an exceptional location in the centre of Amsterdam, situated next to the Amsterdam Flower Market and the vibrant nightlife district Reguliersdwarsstraat. It is surrounded by many popular restaurants, bars and shops, contributing to a great working environment for employees.



Shopping street Kalverstraat



City centre Rokin



Hotel De L'Europe



Nightlife district Reguliersdwarsstraat



Sprekelsgracht

**BLOOM
HOUSE**

Spui

Kalverstraat

Bloemenmarkt

Rembrandtplein

Hotel L'Europe

Rokin

Amstel



Accessibility

This prime location is easily accessible by public transportation and just a few steps away from Amsterdam North/South Metro Line.



PUBLIC TRANSPORT

Amsterdam CS - 7 min
Amsterdam Zuid - 13 min
Schiphol - 29 min
Utrecht - 39 min



CAR

Amsterdam Zuid - 15 min
Schiphol - 28 min
Utrecht - 45 min



BY FOOT

Amsterdam CS - 20 min
Rembrandtplein - 5 min
Rijksmuseum - 14 min
Kalverstraat - 1 min
Dam Square - 10 min



BICYCLE

Amsterdam CS - 7 min
Amsterdam Zuid - 15 min
Vondelpark - 5 min
De Pijp - 7 min

Availability

In total approx.

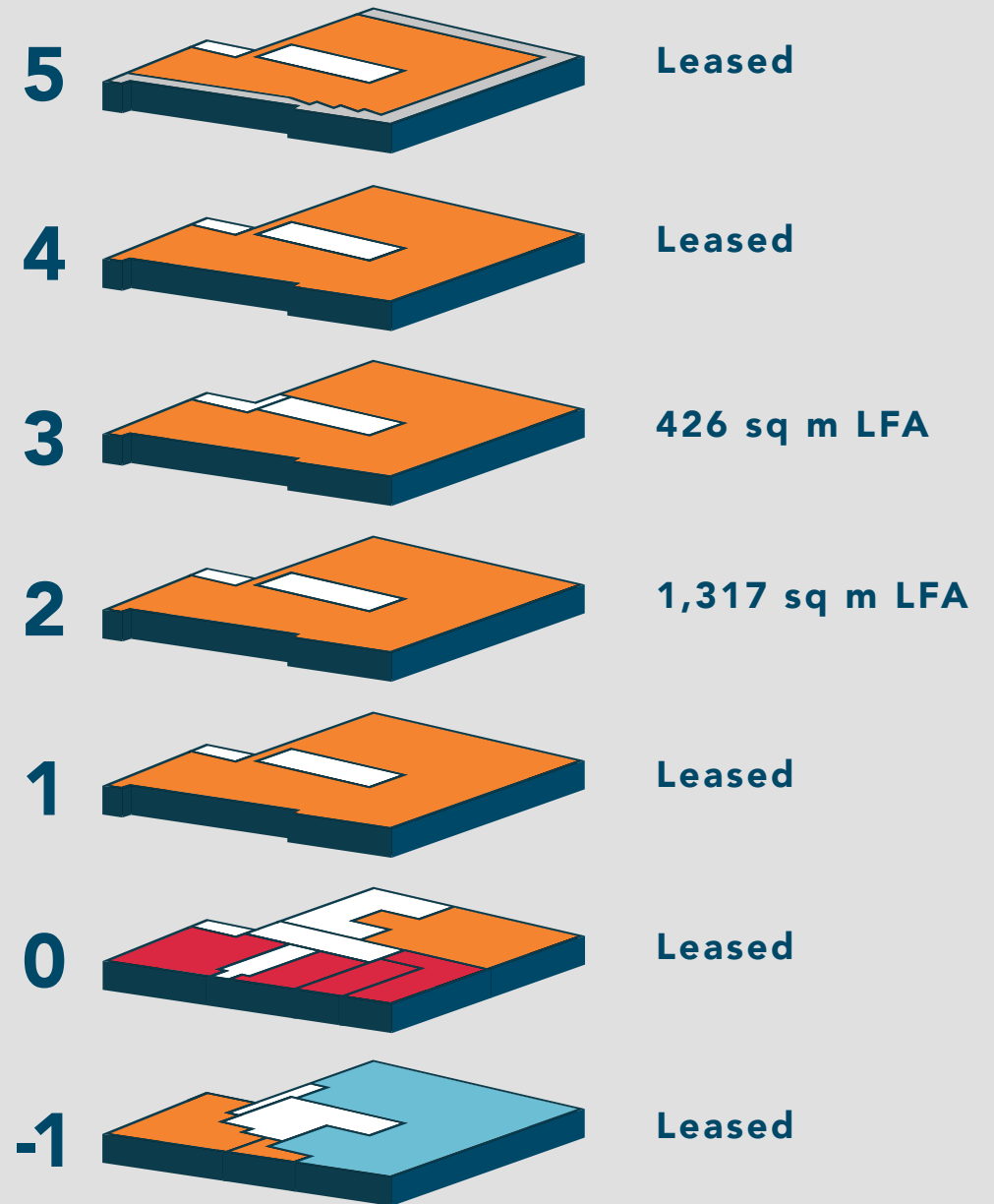
6,660 sq m LFA

For rent:

1,743 sq m LFA, divided into:

2nd floor **1,317** sq m LFA

3rd floor **426** sq m LFA



■ Shops ■ Parking ■ Available ■ Roof terrace

Office building

Open-plan workspaces versus private offices.

This contemporary office space is ready for immediate occupancy. The building comprises of open-plan workspaces and private offices with a colourful and striking design. Each office space is ready to use with a modern fit-out, centralized air conditioning and plenty of natural light creating a pleasant and healthy working environment.





Facilities to meet the needs of modern businesses

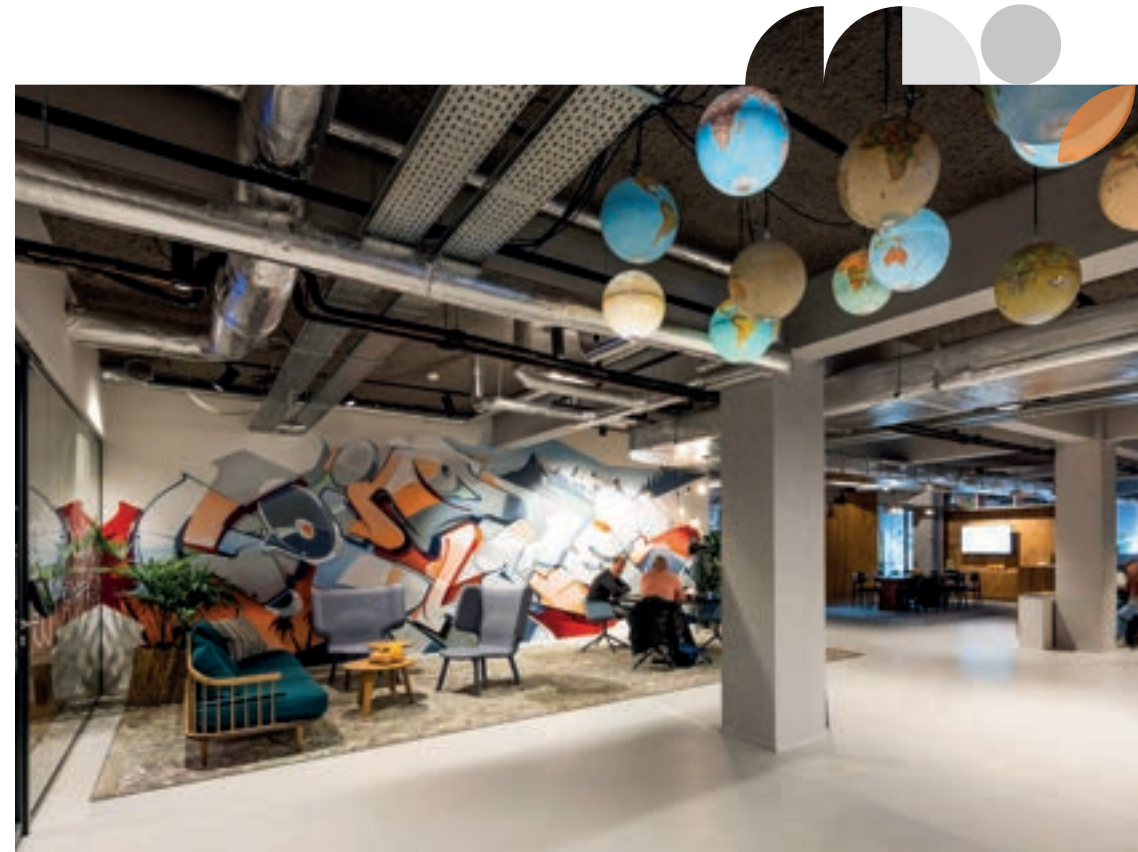
Bloomhouse understands the importance of facilities to meet the needs of modern businesses. The office building therefore included meeting rooms, reception area, espresso bar, restaurant and informal meeting areas. The comfortable lounge areas and the rooftop terrace with a stunning view are the perfect places to relax and enjoy a break.

Interior

Colourful working environment



Architecture and interior design agency HofmanDujardin transformed the existing office building into a completely new working environment as lively as the streets around. Graffiti artists Selwyn Senatori and Vincent Huibers created distinctive wall art. The well-considered interior design in combination with the lay-out and the impressive artwork ensures a balance in stimulating collaboration and facilitating concentration.





“The different atmospheres form a background to the team zones and create a varied journey through the building.”

In between souvenir stores, the entrance leads directly to the espresso bar on the ground floor which offers a diversity of places to sit, meet, game and relax. A timber staircase connects the espresso bar to the restaurant, where patterns on the floor mark the various areas to have lunch.

On the upper floors, all team tables are arranged along the facades to create a light zone stimulating concentration. In the centre of each floor a diversity of different seating areas, coffee and snack points encourage collaboration and informal meetings.





Features



City Centre

Excellent accessible office location in the heart of Amsterdam



Spacious office

Bright office space with high ceilings



Premium delivery

High-end finishing



Efficient floor plan

Large, open & flexible floors



Excellent accessibility

A stone's throw from Amsterdam's metro North/South line



Vibrant interior

Distinctive, modern and colourful interior



Sustainability

Energy label A

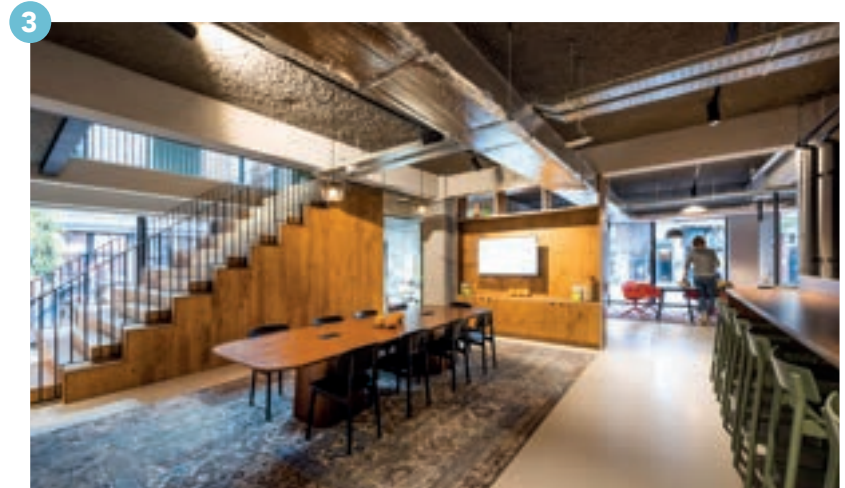
Delivery level

- ✓ The current fit-out is delivered complete 'as is';
- ✓ Operating data (cabling);
- ✓ Work/meeting rooms;
- ✓ Luxury sanitary facilities on each floor;
- ✓ Industrial ceiling with ventilation, cooling and heating via induction units;
- ✓ Access systems with access cards;
- ✓ Lighting fixtures throughout the building, also lighting on ground and first floor;
- ✓ All signage and stickers from previous tenant will be removed.



Facilities

- 1 Entrance hall with reception desk;
- 2 3 Elevators and spacious staircase;
- 3 Fully equipped espresso bar on the ground floor, with a variety of furnished seating, meeting, relaxation areas;
- 4 Large furnished restaurant with fully equipped catering kitchen on the first floor;



6



5



7



- 5 Formal and informal meeting rooms/ spaces equipped with furniture, hardware, data cabling and wall fixed items (TV bracket, graffiti art, notice boards, whiteboards and canvases);
- 6 Game room;
- 7 Pantries with diversity of seating, coffee and snack points with fixed furniture in the middle of each floor;



- 8 Roof terrace with breathtaking views;
- 9 Dressing rooms with showers (without lockers);
- 10 Enclosed bicycle parking with bike racks;
- ✓ Enclosed car parking with 16 parking spaces;
- ✓ Meditation room.

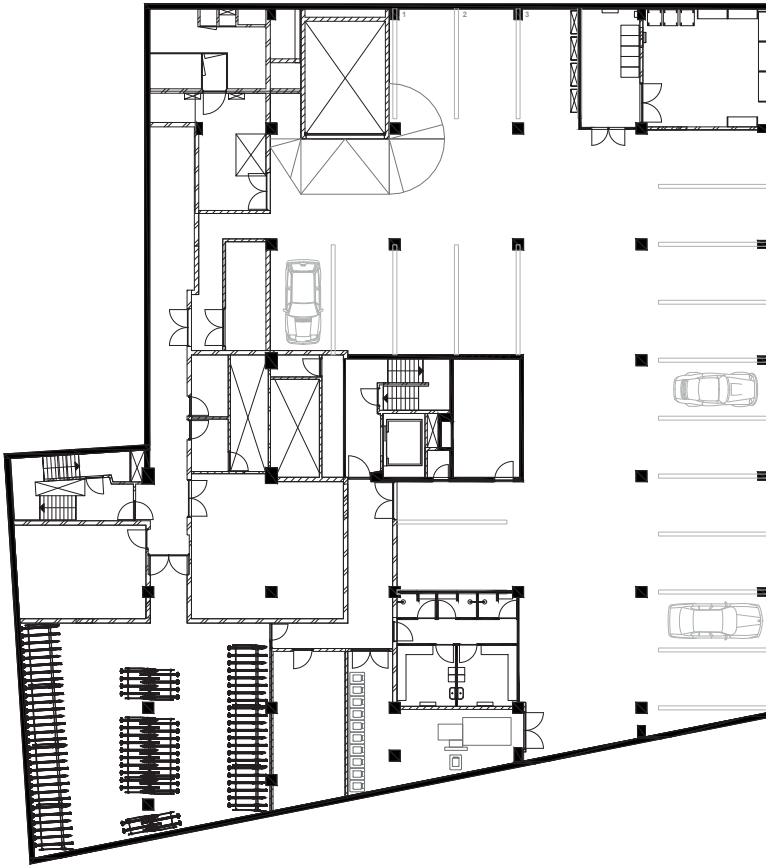


Floor plans

Basement -1

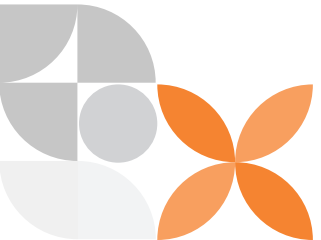
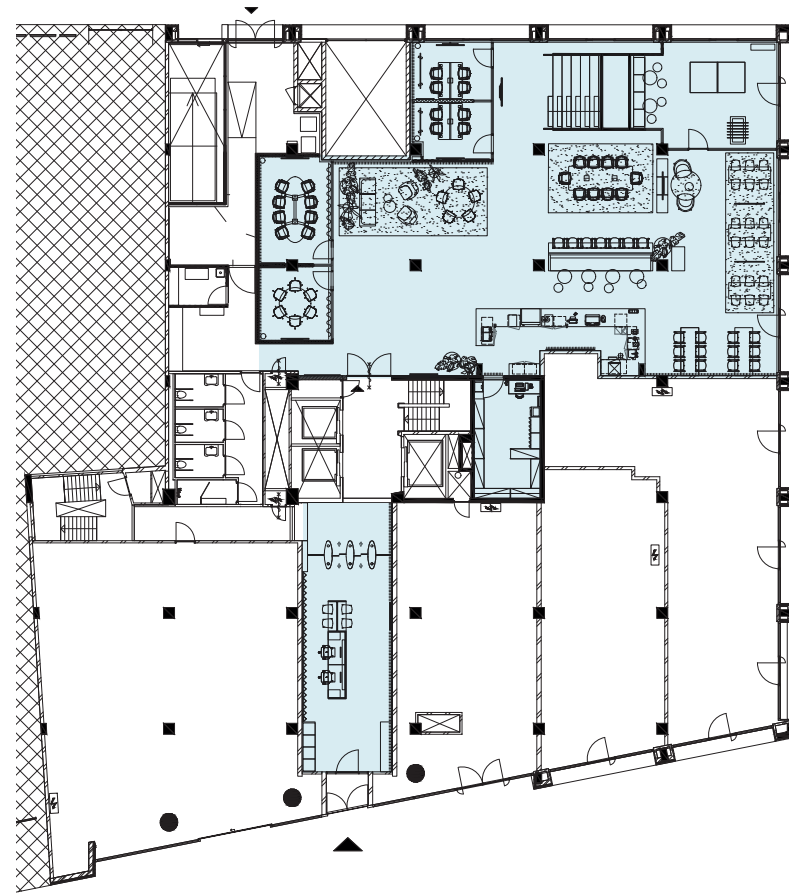
255 sq m LFA

16 parking spaces and ample cycle parking



Ground floor

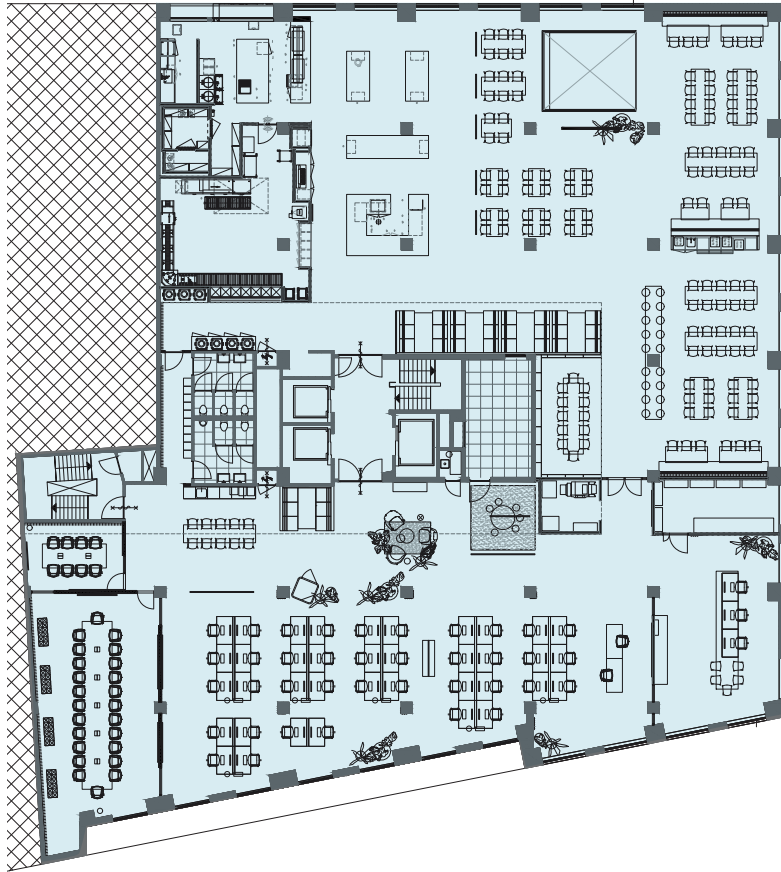
582 sq m LFA





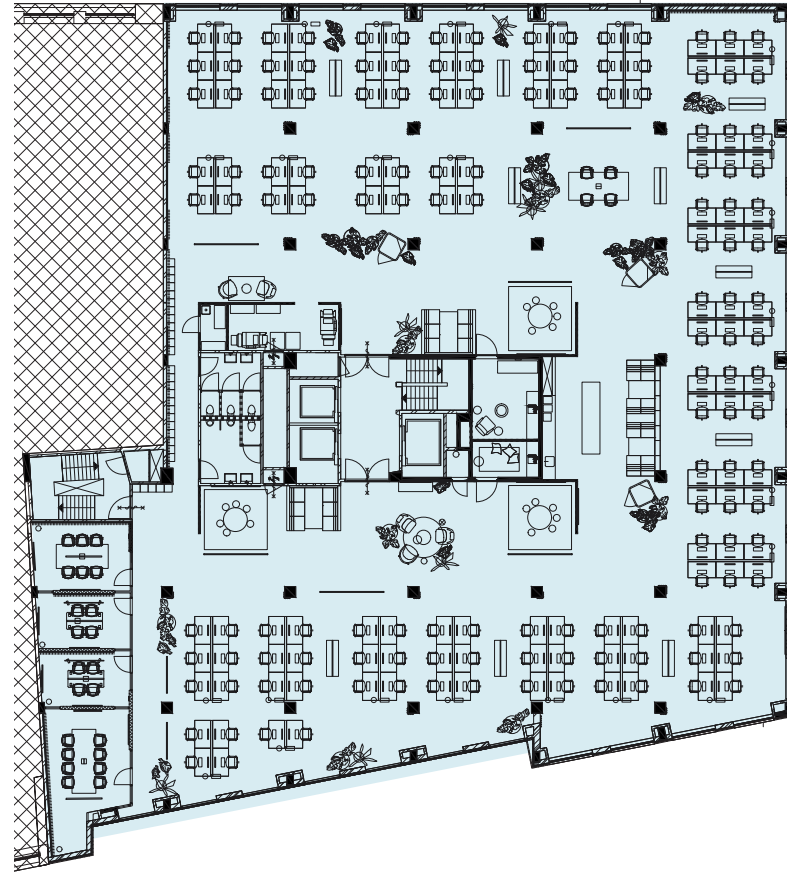
First floor

1,216 sq m LFA



Second floor

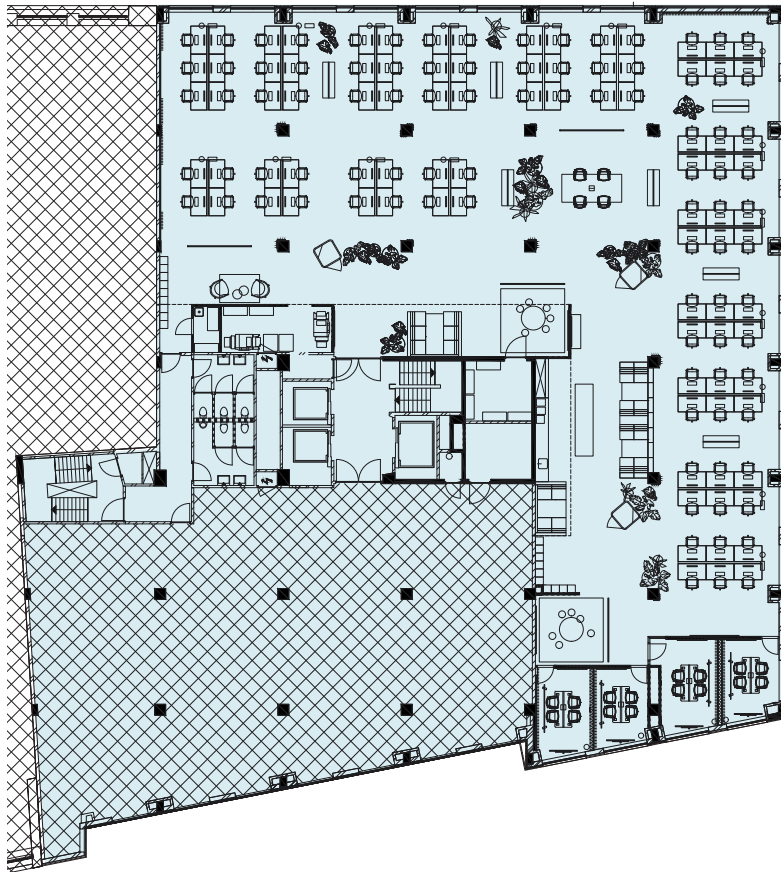
1,220 sq m LFA





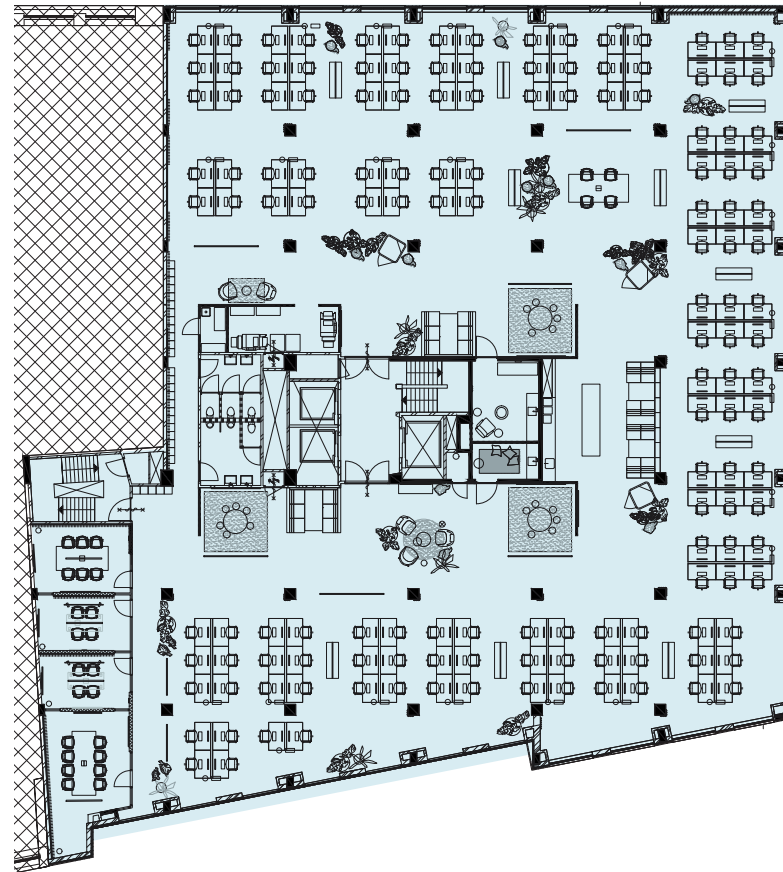
Third floor

1,220 sq m LFA



Fourth floor

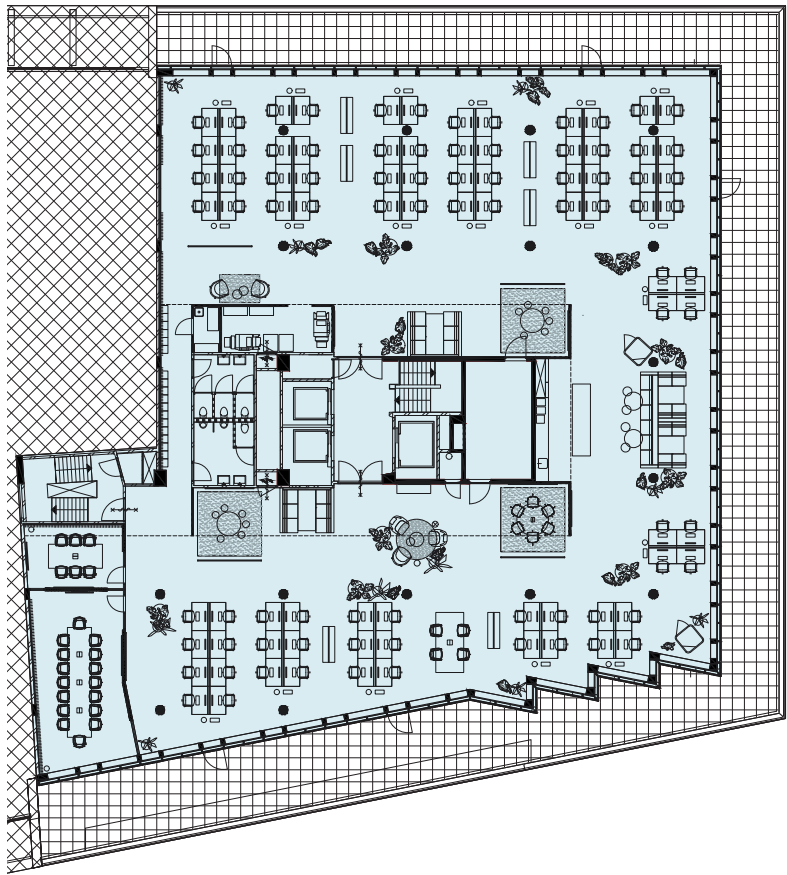
1,220 sq m LFA





Fifth floor

946 sq m LFA



Contact

Schedule a tour and see for yourself why this building is the ideal place for your business to bloom.

CBRE

Lucas Floors

+31 6 2137 9117

lucas.floors@cbre.com

Tim Butz

+31 6 5000 5920

tim.butz@cbre.com



Maarten Tieleman

+31 6 5428 3992

maarten.tieleman@jll.com

Frederique Ensink

+31 6 2006 1041

frederique.ensink@jll.com

Although the information in the brochure has been compiled with the greatest care, no rights can be derived from its contents. The published images provide inspiration for a possible delivery, but no guarantees are given for this.

Commissioned by:  **PATRIZIA**